

Customer Testimonials

Netflix / Scanline

USA / Germany

VFX Pre-production



"I saw the potential for what Mosaic is capable of doing with what we are dealing with in the VFX world – mainly the difficulties of capturing large environments and large data sets, easily, quickly and at a reduced cost."

Dymaxion

Colombia

Electrical grid & road inspection



"Even when temperatures exceeded 40°C, we could reliably drive 300-400 km a day without issue. Non-vendor locked data allows us to make our own solution for post-processing without having to renew a software contract yearly."

Field

Norway

Roadway & railway surveying



"The Mosaic X operates very well in harsh Nordic winter conditions, proving how robust it is and helped complete a railway inspection project in 10 days rather than 6 months."

Mapersive

Morocco

Urban planning and development



"Mosaic 51 reduces the time needed for data capture and processing due to its high-resolution and efficient imaging capabilities. The consistent quality and accuracy of data captured make it a reliable choice."

Vulcan Line Tools

USA

Utility pole inspection and FTTX planning



"The Mosaic X camera allows us to travel at highway speeds while collecting high quality imagery, which is crucial for us to maintain our overall value proposition: low-cost, low-time, and highly accurate field inspections. Something our previous solution did not."

Sevier County

Utah, USA

Rural municipality transportation planning



"On every single metric, the Mosaic 51 beat out its competitors: its image quality is best... the imagery is nonproprietary... cost-efficient... buying this camera was one of the easiest decisions ever made."

Read more success stories on mosaic51.com/case-studies



360° Mobile Mapping Camera Systems

Highest resolution and most durable 360° camera systems in the world.

Mosaic is revolutionizing the quality of imagery data for mobile mapping with our 360° cameras and systems.



Global Reliability

Trusted in 50+ countries – capturing in extreme heat, cold, rain, and humidity – mapping hundreds of thousands of kilometers annually.



Workflow Freedom

You own your data – process it with our software or seamlessly integrate it into your workflow, with no extra license fees.



Unmatched Customer Care

Best post sale support. Get help directly from our engineers and operators.

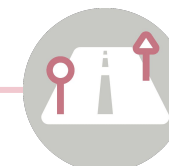


Flexible Integration

Use as a standalone system or incorporate it into your existing systems to meet demand.



Asset Mgmt.



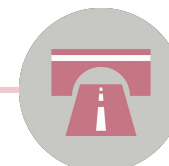
Road Inspection



Street View



Infrastructure Inspection



Debris Mgmt.



Camera Specs



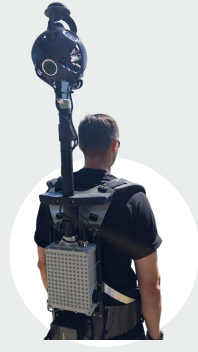
Mosaic 51

The most robust & economical mobile mapping camera



Mosaic X

Where speed meets accuracy in 360° street view capture



Mosaic Xplor

Easy capture on foot or scooter, up to 25 km/h (15mph)



Viking

The world's highest resolution mobile mapping camera

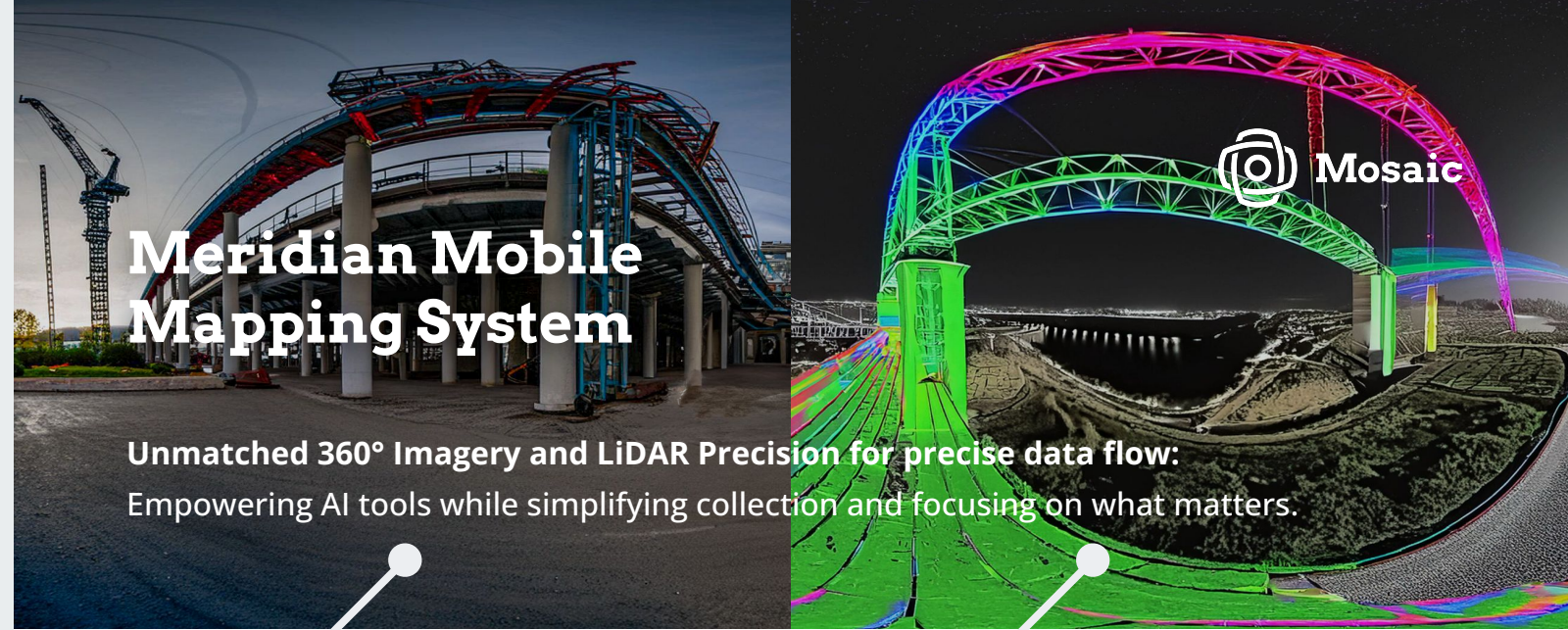
Shutter type	Rolling	Global	Global	Global
Weight	4.6 kg / 10 lbs	7 kg / 15 lbs	7 kg / 15 lbs Only 2 kg overhead	30 kg / 66 lbs
Equirect. Resolution	75.5 MP	91.2 MP	91.2 MP	200 MP
Pixel size	1.55 ² microns	2.74 ² microns	2.74 ² microns	3.45 ² microns
Stitched Panorama	12.3K	13.5K	13.5K	20K
Temp. Range	0 to 45 °C 32 to 115 °F	0 to 45 °C 32 to 115 °F	0 to 45 °C 32 to 115 °F	0 to 45 °C 32 to 115 °F
Humidity Range	0 to 100%	0 to 100%	0 to 95%	0 to 100%
Max FPS	10 FPS	10 FPS	10 FPS	5 FPS
Onboard sensors	GNSS	GNSS	GNSS, LiDAR	N/A (configurable upon request)
Data stored onboard	Imagery, GPX files, frame times	Imagery, GPX files, frame times	Imagery, GPX files, frame times, Lidar data, trajectory	RAW imagery in dng
Storage	Onboard 1TB SSD (hot swappable)	Onboard 1TB SSD (hot swappable)	Onboard 1TB SSD (hot swappable)	6x4TB 3.5" SATA SSD



it's all
NEW
this season

Unparalleled image quality

Capture ultra-high-resolution images with superior clarity.



Meridian Mobile Mapping System

Unmatched 360° Imagery and LiDAR Precision for precise data flow: Empowering AI tools while simplifying collection and focusing on what matters.



Mosaic X Camera

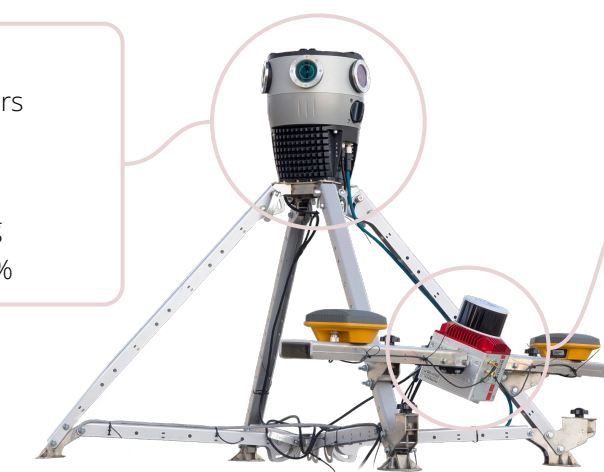
- High-resolution 360° imagery
- Suitable for various lighting conditions
- Precisely synchronized sensors
- Sharp images from all angles



LiDAR, GNSS and IMU

- High accuracy and performance
- Versatile and user-friendly operation
- Robust data processing and logging

- 91.2 MP Images
- Global shutter sensors
- 10 FPS, 8 bit h.264
- Removable 1TB SSD
- 21 x 21 x 25 cm, 7 kg
- IP64, 0-45°C, 0-100%



- Accuracy: 2-3 cm
- Precision: 2-4 cm
- Range 120 m
- 512 GB SSD
- INS: IMU and Novatel GNSS
- Position Accuracy: 1 cm + 1 ppm (RTK); 0.5 cm (PPK)

- Full system dimensions including mount: 83 x 120 x 81 cm, 15 kg
- Fits standard roof racks



Learn more about Meridian

Applications:

Impact Industries with High-Quality Data



Surveying & Mapping

Streamline data collection, improve accuracy, and reduce fieldwork time.



Asset Management:

Create detailed visual records of infrastructure, aiding in maintenance and planning.



Construction & Engineering:

Monitor progress, conduct site surveys, and produce as-built documentation.